

LeukoGnost

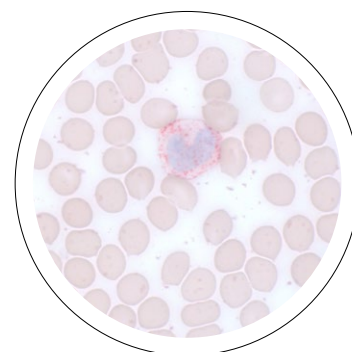
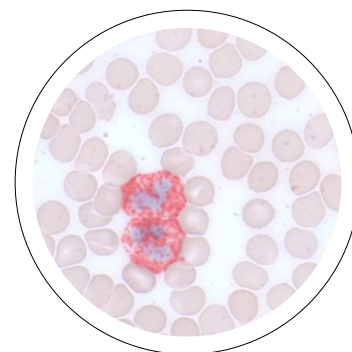
DIAGNOSTIC CYTOCHEMICAL STAINING KITS
FOR THE DETECTION OF LEUKEMIA AND
MYELOPROLIFERATIVE DISEASES

ADVANTAGES OF USING LEUKOGNOST KITS

- Easy and fast staining using stabilized ready-to-use reagents
- Reagent volume optimized for a precise number of tests
- Staining at room temperature
- Single fixative used in all kits
- Uniform staining intensity
- Quick and reliable results
- Long stability of reagents

PRINCIPLE OF LEUKOGNOST STAINING

1. Fixation of the air-dried blood and bone marrow smears in LeukoGnost fixative
2. Wash with distilled water
3. Stain the slide with freshly prepared staining solution
4. Wash with distilled water
5. Counterstain with LeukoGnost HEM (hematoxylin reagent)
6. Wash with tap running water
7. Air dry and cover with BioMount Aqua



LeukoGnost
SPE



APPLICATION OF LEUKOGNOST KITS

Kit	Name	Enzyme / Staining	Type of leukemia (According to FAB classification)
1	LeukoGnost PAS	Periodic acid-Schiff	erythroleukemia (M6) (AML) acute lymphocytic leukemia (ALL)
2	LeukoGnost SPE	Specific esterase	acute myelomonocytic leukemia (M4Eo) acute promyelocytic leukemia (M3) (AML)
3	LeukoGnost NSE	Non-specific esterase	acute myelomonocytic leukemia (M4) (AMML) acute monocytic leukemia (M5) (AML)
4	LeukoGnost MPO	Myeloperoxidase (peroxidase)	acute myeloid leukemia (AML)
5	LeukoGnost ALP	Alkaline phosphatase	chronic myeloid leukemia (CML)
6	LeukoGnost ACP	Acid phosphatase	hairy-cell leukemia (CLL) T-cell acute lymphoblastic leukemia
7	LeukoGnost SPENSE	Specific and non-specific esterase	acute myelomonocytic leukemia (M4) (AMML) acute myeloid and monocytic leukemia (AML)
8	LeukoGnost PERLS	Prussian (Berliner) blue	myelodysplastic syndrome (MDS)