

LeukoGnost

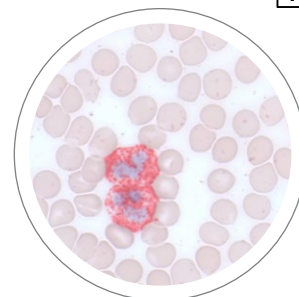
DIAGNOSTIC CYTOCHEMICAL STAINING KITS
FOR THE DETECTION OF LEUKEMIA AND
MYELOPROLIFERATIVE DISEASES

ADVANTAGES OF USING LEUKOGNOST KITS

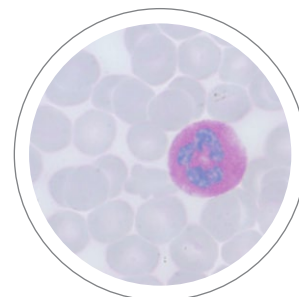
- Easy and fast staining using stabilized ready-to-use reagents
- Reagent volume optimized for a precise number of tests
- Staining at room temperature
- Single fixative used in all kits
- Uniform staining intensity
- Quick and reliable results
- Long stability of reagents

PRINCIPLE OF LEUKOGNOST STAINING

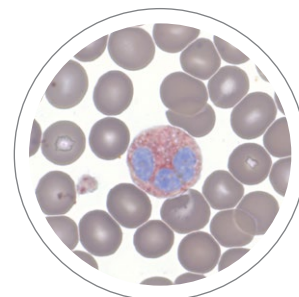
1. Fixation of the air-dried blood and bone marrow smears in LeukoGnost fixative* (not included, order separately)
2. Wash with distilled water
3. Stain the slide with freshly prepared staining solution
4. Wash with distilled water
5. Counterstain if required
6. Wash with tap running water or distilled water
7. Air dry and cover if required



LeukoGnost SPE



LeukoGnost PAS



LeukoGnost ACP

APPLICATION OF LEUKOGNOST KITS

Kit	Name	Enzyme / Staining	Type of leukemia (According to FAB classification)
1	LeukoGnost PAS	Periodic acid-Schiff	erythroleukemia (M6) (AML) acute lymphocytic leukemia (ALL)
2	LeukoGnost SPE	Specific esterase	acute myelomonocytic leukemia (M4Eo) acute promyelocytic leukemia (M3) (AML)
3	LeukoGnost NSE	Non-specific esterase	acute myelomonocytic leukemia (M4) (AMML) acute monocytic leukemia (M5) (AML)
4	LeukoGnost MPO	Myeloperoxidase (peroxidase)	acute myeloid leukemia (AML)
5	LeukoGnost NAP	Alkaline phosphatase	chronic myeloid leukemia (CML)
6	LeukoGnost ACP	Acid phosphatase	hairy-cell leukemia (CLL) T-cell acute lymphoblastic leukemia
7	LeukoGnost SPENSE	Specific and non-specific esterase	acute myelomonocytic leukemia (M4) (AMML) acute myeloid and monocytic leukemia (AML)
8	LeukoGnost PERLS	Prussian (Berliner) blue	myelodysplastic syndrome (MDS)

NEW

* **LeukoGnost PLUS** – additional set of reagents for use with LeukoGnost kits. Contains fixative, hematoxylin reagent and water-based mounting medium.